



Erex System News

Eress Forum
16th June 2020

Gunn-Helene Krogstad, System Manager, Eress
Eirin Gunnufsen, Analyst, Eress



Erex settlement

Train Run model

- Receive Metering data
- Receive Train Run data, weight and distance
- Use consumption factors to estimate on train run level
- Receive extra data to validate metering data like
 - Supply metering data
 - Degree days
 - Fixed installation metering data
- Combine train run data and Metered data

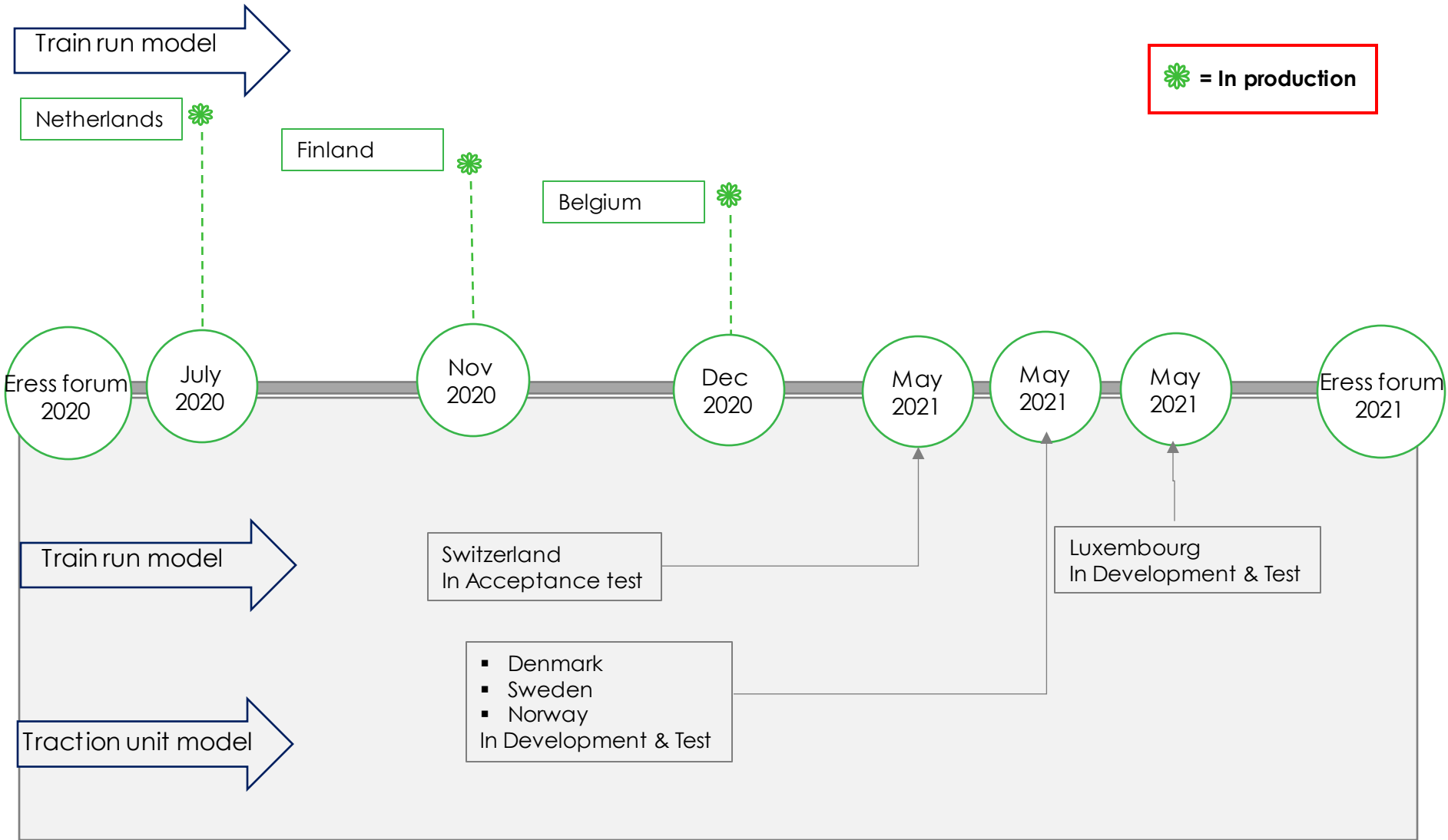
❖ Train run as the billing point

Traction Unit model

- Receive Metering data
- Use consumption factors to estimate on aggregated level e.g. by introducing gross tonne data for traction unit type or organisation
- Receive extra data to add to and validate settlement like
 - Supply metering data
 - Fixed installation metering data

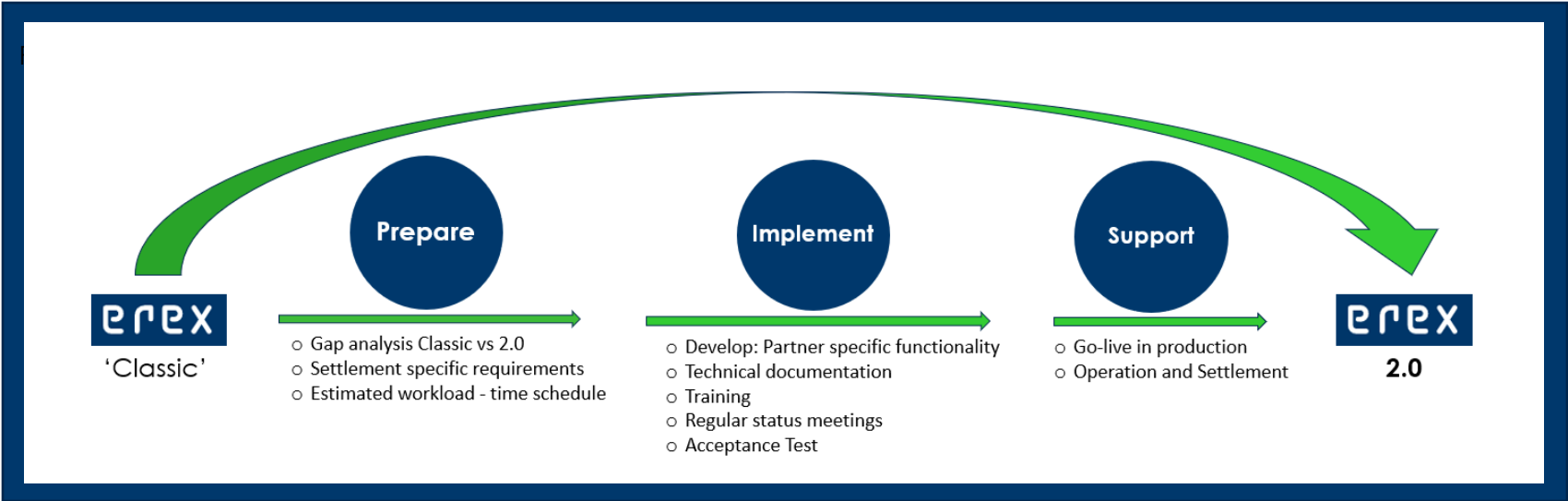
❖ Traction unit as the billing point

Erex 2.0 System – Since Forum 2020

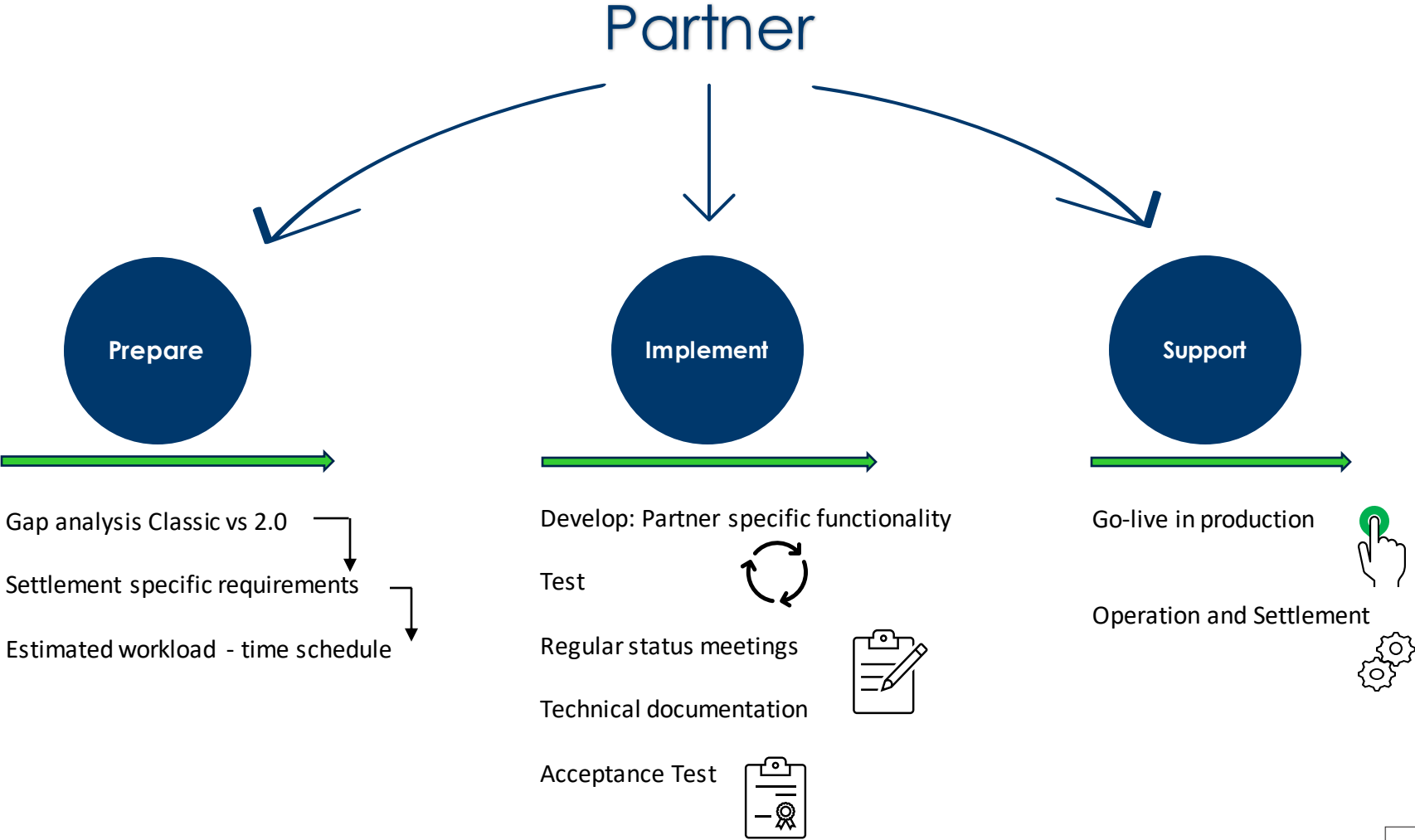


Erex 2.0 Transition information

- Erex 2.0 is a new and improved version of Erex
- A Transition Project is being run to develop Partner specific settlement functionality and ensure a smooth transition
 - Development of Partner specific settlement functionality will only have an impact on that specific settlement
 - Improved or new functionality is available for all Erex 2.0 users
- The transition process to Erex 2.0 consists of 3 phases, in which Partners are involved. The picture below describes the main activities in the process:



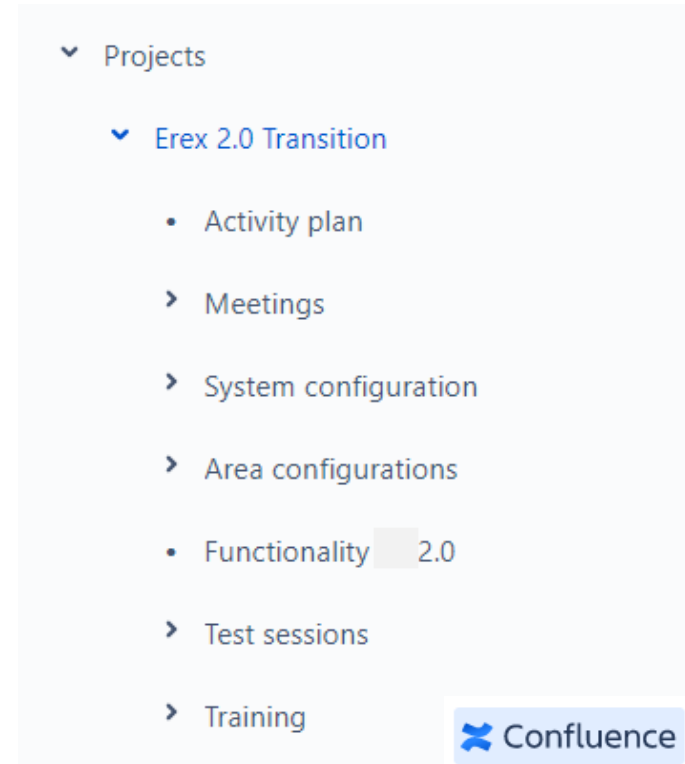
Partner involvement in the Transition Project



Interaction and cooperation

- Working all together as one team
- Transparency throughout the process
- Traceability and documentation
- Working agile
- Training by testing in the system
- Separate training session for Train Operators

Partner site:



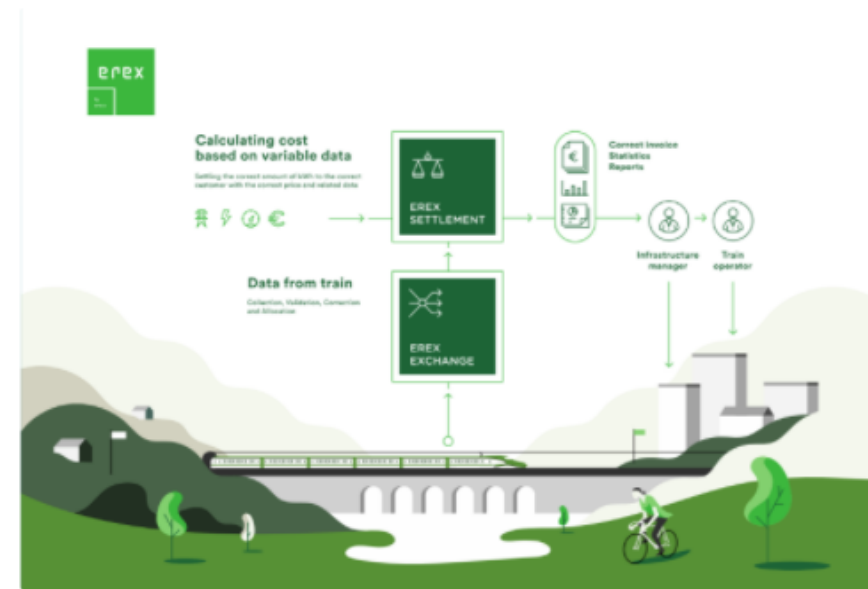
The screenshot shows a navigation menu for a Confluence partner site. The menu is structured as follows:

- ▼ Projects
 - ▼ Erex 2.0 Transition
 - Activity plan
 - Meetings
 - System configuration
 - Area configurations
 - Functionality 2.0
 - Test sessions
 - Training

A blue button with the Confluence logo and the text "Confluence" is located at the bottom right of the menu.

Release management Erex 2.0

- Erex 2.0 test; Every week one deploy
 - Joint test session with Eress administration and test recourse of developer
- Erex 2.0 Preproduction; Planned and stable deploys with new features, and before new partners to production
 - Joint test sessions will all partners currently in production, so far 3 sessions have been conducted, next planned for before summer
 - Release-notes are made available on Eress confluence for Partners
- Deploy to production
 - Release-notes are also made available



Search this space

System documentation

[Erex 2.0 User guide](#)

[Exchange](#)

[DCS](#)

[Erex 1.0 User Guide](#)

Documentation of processes

[Erex administrative processes](#)

[Eress Administration SLA toward Eress partners](#)

Project information

[Project Information](#)

Deploy Information

[Deploy information](#)

Penetration test performed October 2020

Web Application Vulnerabilities Statistics



Diagram 1: Number of vulnerabilities in your web application grouped by risk levels

7,093,795
HTTP Requests

253,350
Exploit Payloads

5,067
Attack Vectors

Erex

- ❖ Transparent through the entire process
- ❖ Organisations with users have complete dataflow availability to their own data
- ❖ Secure access, only access to consumption related to your organisations settlement
- ❖ Encourages competition on the grid on the same premises
- ❖ Penetration test conducted October 2020 and only a few low risks identified, no risks of higher rank