



# Eress in the Times of Covid-19

Eress Forum  
16<sup>th</sup> June 2021

Dyre Martin Gulbrandsen  
Eress Director





**RAILWAY ENERGY IN EUROPE**

How are we doing?

# Eress went digital



[HOME](#)

[ERESS EVENTS](#)

[OTHER EVENTS](#)

[EVENTS FOR PARTNERS ONLY](#)

[CONTACT US](#)

## Eress Events



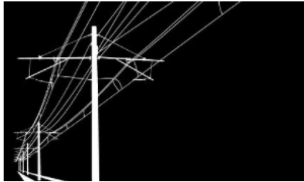
Energy requirements on trains, new energy sources (hydrogen, batteries)

Teams

September 08, 2021 10:00 - 12:00

The program will be published soon

[More](#)



Energy Metering & DAS Day

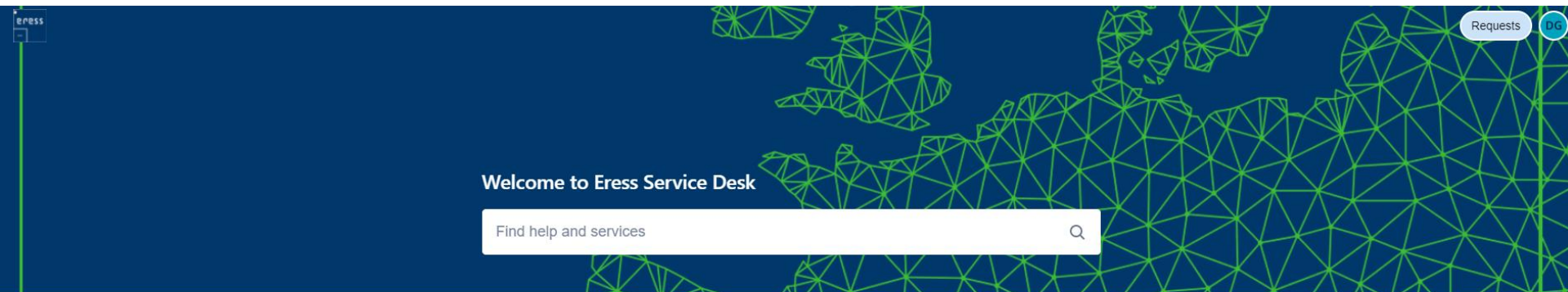
Teams

October 06, 2021 9:00 - 12:00

The program will be published soon

[More](#)

# Professionalized service management



Welcome! You can raise a Eress Service Desk request from the options provided.

What can we help you with?



#### [Report an incident](#)

Tell us the problems you're experiencing



#### [User Management](#)

Request to add, update or delete users in Erex , Exchange or in Service Desk



#### [Change request](#)

See a place where we can do better? We're all ears.



#### [Other questions](#)

Don't see what you're looking for? Select this option and we'll help you out.

# Erex 2.0 - welcome on board!

erex

## Get on board

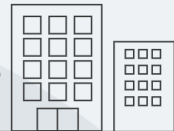
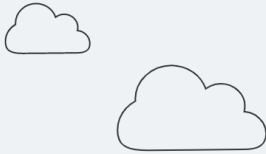
Username

Password

Remember me

[Forgot Password?](#)

Log In



# New DCS service in Eress



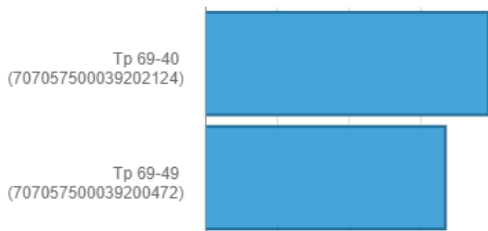
# We need to document our environmental impact

1 Total consumption   2 Corridor view (cars)   2 Corridor view (trucks)   3 Line   4 Line consumption   (5 Alternative)   Travel time for line >



Line:  
Filter on trains or dates to compare accumulated net consumption every 5 minutes after departure.

Net Consumption etter Train name 🔍 👤

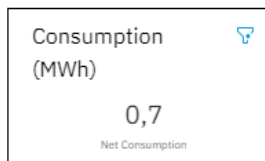
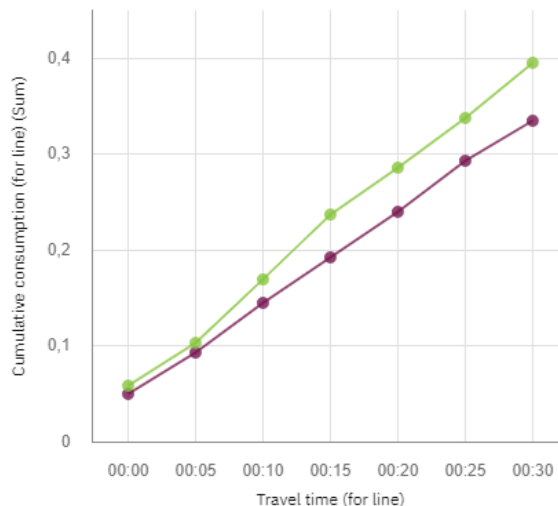


Net Consumption etter Description, Departure Time 🔍 👤



Cumulative consumption (for line) etter Travel time 🔍 👤  
(for line)

Departure Time  
● 13.01.2021, 10.35 ● 01.07.2021, 18.35



A high-angle photograph of a red high-speed train curving along a track next to a turquoise river in a mountainous landscape. The train is moving from the top left towards the bottom right. The river is a vibrant turquoise color, contrasting sharply with the dark, rocky terrain. The background shows steep, rocky hillsides. A white rectangular box is overlaid on the center of the image, containing text.

**RAILWAY ENERGY IN EUROPE**

How are we doing?