



INFRA

railpower
box

ERESS EMS Day

09.10.2023

Eva Kozak

Marin Zwetkow



Power supply for
trains



Electricity from
hydroelectric
power

Air conditioning
of trains

Heating of switch
points

Energy management
and climate protection

Power meters can
be used
internationally

Power for
workshops, offices,
shops



Environment-friendly
heat and refrigeration
supply



Web application at a
glance

railpower box

- Settlement and Billing in 14 countries
- ~ 3,000 units in 14 countries
- 44 customers all over Europe

CONVINCED COMPANIES ALL OVER EUROPE

Railway undertakings



Manufacturers of traction vehicles



Leasing provider of traction vehicles



Data Exchange of railpower box in Europe

- Data Exchange with:
 - Germany, Austria, Hungary, Slovenia, Czech Republic, Switzerland, Belgium, Netherlands, Denmark, Sweden, Finland, Norway, Romania, Bulgaria,
 - In preparation: Poland, Slovakia, Italy, France, Croatia



railpower system 2.0 way forward



IT Landscape

- Adaption & implementing new IT modules, interlinking var. backend systems



Harmonisation

- Implementation of IRS90930
- Interoperability: Data Exchange, (XML format), etc



Go Live of RPS 2.0

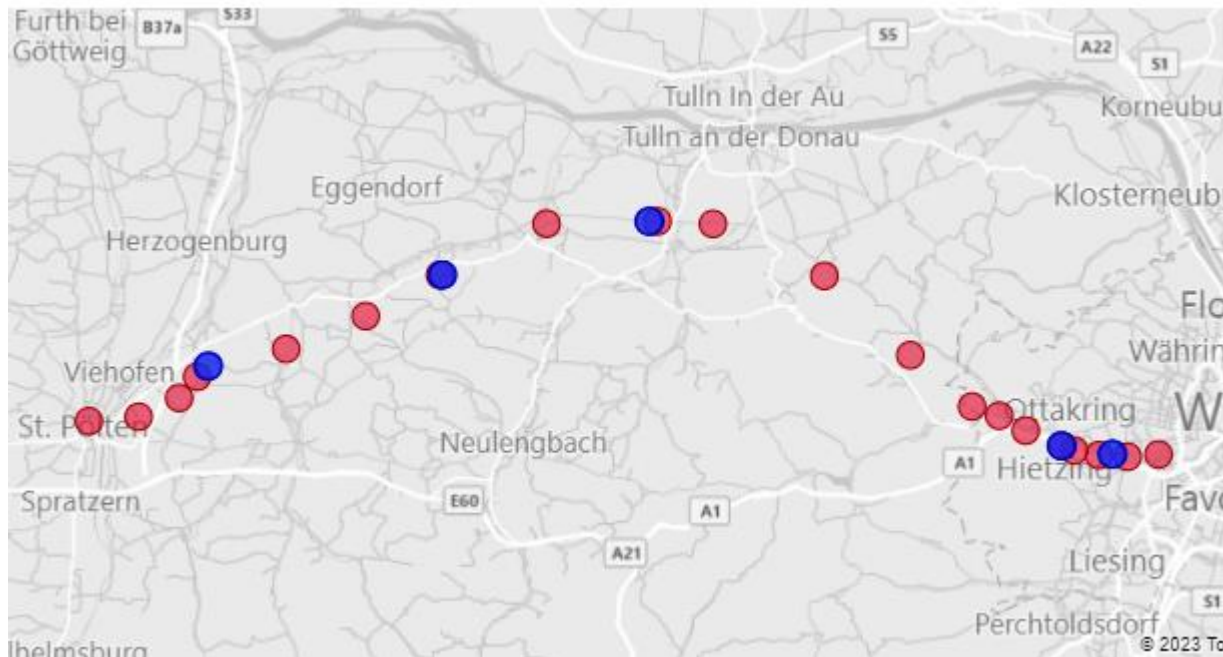
- 1.1.2024

Current Updates

- RPS 2.0: final sprint – go live by 1.1.2024
 - Additional features:
 - Validation of Trainrun data against other internal ÖBB systems
 - Geomatching: see next slide
- EMS (railpowerbox) change to XML communication (EMS → DCS): rollout ongoing
- Test Data Exchange with DB
- Master Data (csv Version) exchange: to be in production before end of 2023
- IRS90930 Implementation
 - 1. phase: implementation of automated CEBD exchange
 - 2. phase: implementation of request / response message data exchange & master data (XML)

Geo matching

- Additional method to verify train runs
- Currently at a testing phase

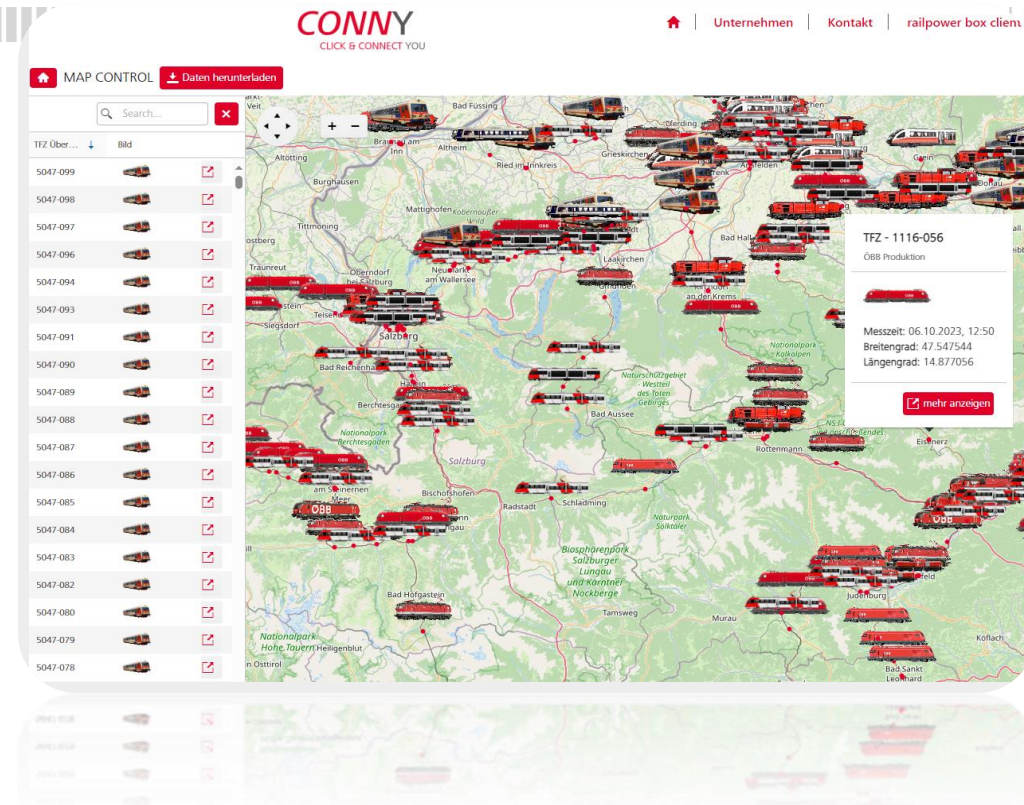


- Substituted location by additional information
- GPS location provided by EMS

Extracting Data from the ÖBB system

Following methods are available for customers to extract data

- Conny: customer friendly platform for visualisation and exporting data from the EMS
- API Interface providing following information 1 hour after the trainrun.
 - GPS data
 - Consumption data
 - Traction system
- Outlook
 - Distance
 - 5G connectivity



Thank you for your attention

Eva Kozak (eva.kozak@oebb.at)

Marin Zwetkow (marin.zwetkow@oebb.at)